

WIRELESS POWER TRANSFER: IN-PAVEMENT STATIC AND DYNAMIC SYSTEMS

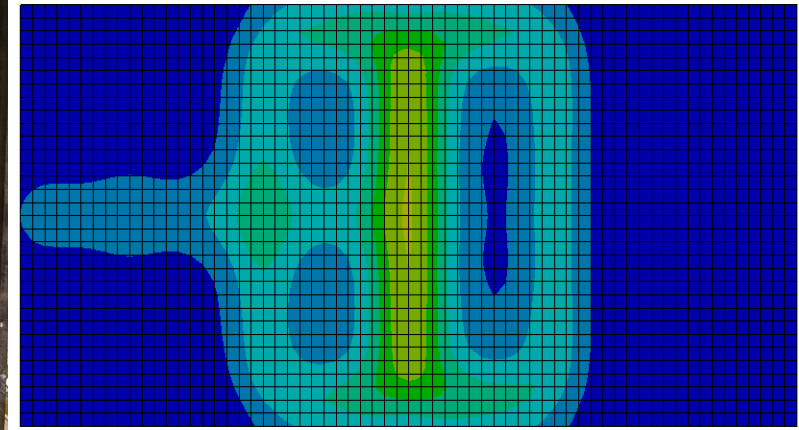
MARV HALLING, PROFESSOR, UTAH STATE UNIVERSITY

CERV CONFERENCE, FEB 2023, PARK CITY



EVR TEST TRACK





BIG PICTURE CHALLENGES FOR IN-PAVEMENT SYSTEMS

- Resiliency
 - Storms
 - Floods
 - Earthquakes
- Durability
 - Design Life
 - Replacement as Needed
- Constructability
 - Meeting tolerances, meeting cost goals